

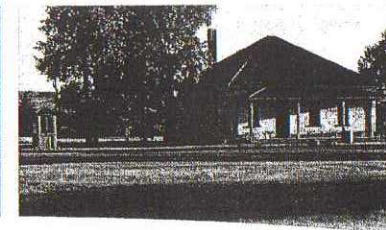
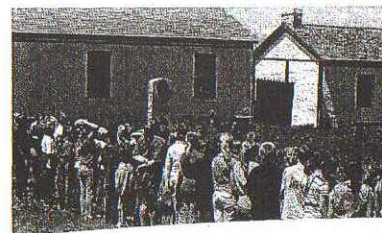
WYOPARKS.STATE.WY.US



The past comes alive through costumed interpreters, museum displays and a reconstruction of Jim Bridger's trading post.



Fort Bridger State Historic Site is administered by the Division of State Parks, Historic Sites and Trails; Wyoming Department of State Parks and Cultural Resources.



HISTORY

"I have established a small fort, with a blacksmith shop and a supply of iron in the road of the emigrants on Black Fork of Green River, which promises fairly..."

Thus spoke Jim Bridger in a letter he dictated to would-be suppliers in 1843. While that small fort lasted a little more than a decade, Bridger's words would prove prophetic. Not only did the location "promise fairly," it proved to be one of the main hubs of westward expansion used by mountain men, Indians, emigrants and Mormon Pioneer, the U.S. Army, Pony Express, Overland Stage and Union Pacific Railroad. Even during the 1900s The Lincoln Highway, Highway 30 and Interstate 80 crossed in or near Fort Bridger.

Established by Jim Bridger and Louis Vasquez in 1843 as an emigrant supply stop along the Oregon Trail, it was obtained by the Mormons in the 1850s, and then became a military outpost in 1858.

After the Fort was abandoned in 1890, most of the wooden structures that remained on fort property were sold and moved off the grounds. Those that remained fell into disrepair. Eventually, various groups and individuals took interest in preserving and restoring what remained. In 1933,

the property was dedicated as a Wyoming Historical landmark

SPECIAL EVENTS



- First Day Hike on January 1st - Walk a mile at 1 pm.
- Easter Egg Hunt the Saturday before Easter Sunday 10 am
- Memorial Day Flag Raising and 21-Gun Salute - call for time
- 4th of July Family Event immediately following the parade in town
- Annual Mountain Man Rendezvous, held every Labor Day weekend - features Native American Dancing, Black Powder shooting competitions, musical entertainment and shopping at a pre-1840s open-air Trader's Row.

LOCATION

Take Exit 34 then 2.5 miles off of I-80 in southwestern Wyoming.

FEES & PERMITS

Daily Use Fees must be paid for each day, per person. Annual Daily Use permits may be purchased at parks, selling agents around the state or at wyo-park.com

RULES

- Pet on leash are welcome.
- Cooking in grills permitted (no open fires).
- Bicycles must stay on main entrance road.
- No alcohol
- No horses
- No firearms or fireworks
- No overnight camping
- No throwing of objects such as Frisbees, balls, horseshoes, rocks, etc.
- PLEASE OBSERVE HANDICAPPED PARKING SIGNS. Violators will be towed at owners' expense.
- Special events must be approved 30-days in advance. Contact site office at 307-782-3842.

